

Mable

Consulting Engineers

Project Engineer Renewable Energy

Civil, Structural, Environmental

Mable Consulting Engineers are currently recruiting for a Project Engineer with 3 to 5+ years' experience to join our team. In this role you will be part of a team responsible for the delivery of large and small scale Renewable Energy Projects. This is an excellent opportunity for an individual seeking to further establish their career in the rapidly growing & multi-disciplinary business. We are offering an attractive package with company benefits based on experience.

What we are looking for:

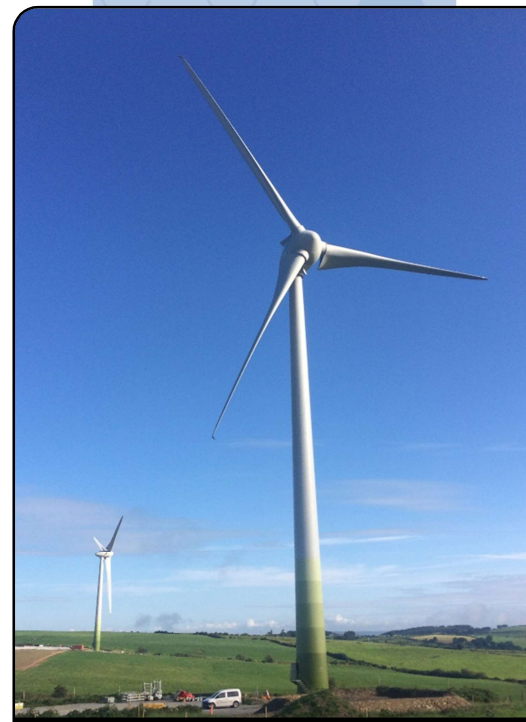
The position requires candidates to hold an Honours Degree in Civil, Structural or Environmental Engineering. Applicants must have 3 years or more post-graduate experience and have a strong knowledge and understanding of engineering principles and project development.

Candidates applying must have the following skills:

- Display strong communication and interpersonal skills and ability to work in a fast-paced team environment with multiple deadlines.*
- Excellent planning, organisational and time management skills, with the ability to balance tasks and prioritise to meet strict deadlines.*
- Experience of working in collaboration with other design disciplines and with contractors.*
- Excellent technical ability and high degree of proficiency and speed in AutoCAD and design software.*
- Excellent communication and stakeholder management skills.*
- Excellent written English.*

Experience in the following design software is desirable:

- Civil3D*
- Infodrainage*
- Robot Structural Designer*
- Infracore*
- QGIS*
- Tekla Tedds*



Main Duties:

Main duties will include the preparation and coordination of Civil, Structural and Environmental Engineering details in the following areas of Renewable Energy Project development:

- Site Layout
 - Infrastructure & Layout Design, Civil3D Cut / Fill analysis.
 - Access Track Design - Floating / Excavated Roads.
 - Transport Route Assessment & Swept Path Analysis.
 - Sightline and Site Entrance Assessment.
 - Crane Hardstanding Design.
 - Coordination of Geotechnical Site Investigations.
- Drainage Design
 - Surface Water SuDS Drainage Design & Reports.
 - Flood Risk Assessment & Coordination of Flood Analysis.
 - Traditional Foul And Surface Water Drainage Design.
- Planning
 - Planning Submissions, Drawings & Application Reports.
 - Construction & Environmental Management Plans (CEMP).
- Traffic & Abnormal Loads
 - Transport Route Assessment Reports.
 - Traffic Management Plans.
 - Coordination of Traffic Studies .
- Electrical Substation & Grid Connection Civil Engineering.
 - AIS & GIS Civil Engineering Layout Drawings.
 - OH & U/G Civil Engineering Layouts & Works Assessment.
 - BCMS Assigned and Design Certifier, Ancillary Certificates.
- Technical Due Diligence
 - Planning & Building Regulation Compliance.
 - Land Registry Compliant Mapping, Easements, Rights OF Way & Wayleaves.
 - Declaration Of Identity.
- Project Management and Administration.
 - Contract Drafting and Administration.
 - Construction Monitoring and Reporting.
- H&S PSDP Role.

What we can offer:

- An excellent salary commensurate to the successful candidate's experience and suitability.
- An opportunity to further establish and grow a career in a rapidly growing Renewable Energy Sector.
- A defined career path with clear objectives and opportunity for progression.
- A strong CPD commitment.

